

ATELIER: How to Identify Sustainability Risks & Adverse Impacts

ATELIER: Measuring & Reporting Social Impact

23-24 April 2024, Rue Victor Oudart 7, 1030 BRUSSELS

CONTEXT

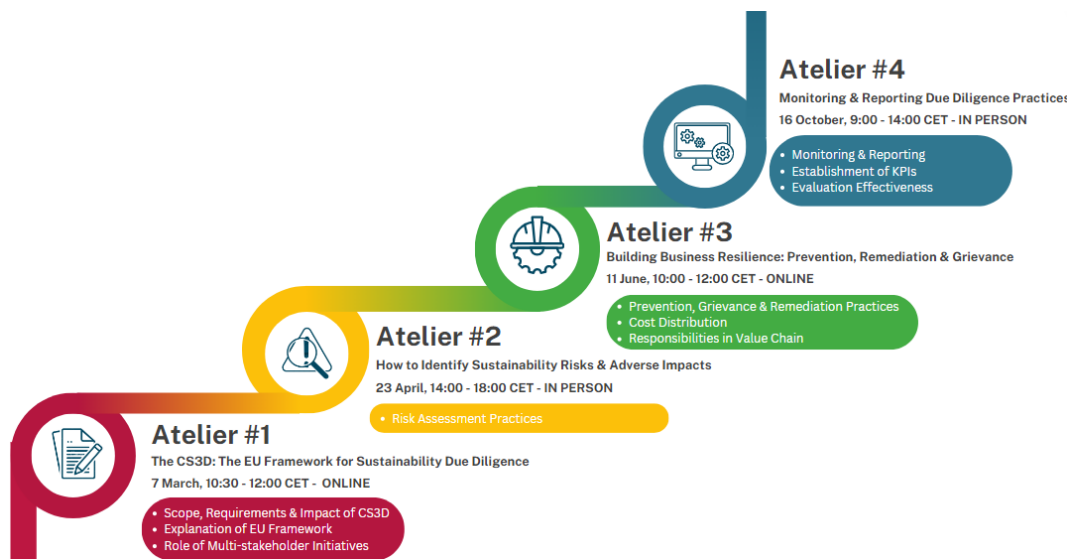
Following the agreement reached by Member States on the **Corporate Sustainability Due Diligence Directive (CS3D)** in March 2024, and awaiting the final vote of the European Parliament expected in April, large companies will be required to implement Due Diligence processes by addressing both actual and potential adverse impacts on human rights and the environment from 2027.

Moreover, following the adoption of the **Corporate Sustainability Reporting Directive (CSRD)** and the **European Sustainability Reporting Standards (ESRS)**, companies are now required to report about their sustainability performance and impacts in a more holistic way, including information on their business model, policies, actions, metrics and targets, as well as how stakeholders are engaged.

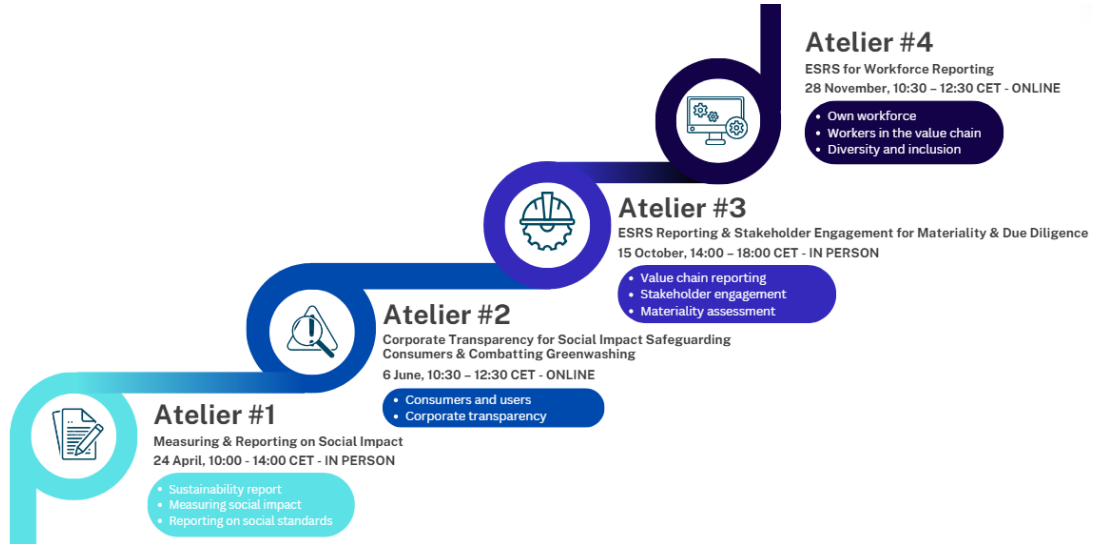
ABOUT THE EVENTS

Embark on a transformative journey with CSR Europe’s **Due Diligence in Action and Reporting on Social Performance 2024 Atelier series** that will bring together companies, expert organisations, and policymakers, to discuss current challenges, approaches, and practices for more impactful policies, actions, and meaningful engagement with affected stakeholder groups.

DUE DILIGENCE IN ACTION 2024 ATELIER SERIES



REPORTING ON SOCIAL PERFORMANCE 2024 ATELIER SERIES



On 23 and 24 April, we invite our Corporate Members in Brussels to join the **How to Identify Sustainability Risks & Adverse Impacts Atelier** and **Measuring & Reporting Social Impact Atelier**. Since both ateliers will cover two sides of the same coin, one focusing more on the **identification and assessment of risks** and the other focusing on how to **measure and report on social issues**, both are inherently connected to impact identification. Therefore, we strongly recommend our members to attend both sessions. This will enable them **to have a holistic approach to the topics and exchange on the main challenges and processes required for their implementation.**

DUE DILIGENCE IN ACTION ATELIER
How to Identify Sustainability Risks & Adverse Impacts
 Tuesday 23 April, 14:00–18:00 CET

REPORTING ON SOCIAL PERFORMANCE ATELIER
Measuring & Reporting on Social Impact
 Wednesday 24 April, 10:00-14:00 CET

WHO SHOULD ATTEND:

- Sustainability Managers
- Reporting Officers
- Public Affairs Officers
- HR Managers

Due to the limited capacity of the venue, only 35 participants can attend each event. Registration alone does not ensure attendance; kindly await the receipt of a confirmation email before booking your travel arrangements. To ensure broad participation among our members and equitable representation, we kindly request that only one individual per company join the event.

DUE DILIGENCE IN ACTION ATELIER: How to Identify Sustainability Risks & Adverse Impacts

TIME (CEST)	SESSION	SPEAKERS
13:45-14:00	Arrival of Participants	
14:00 -14:15	Welcome & Introduction	CSR Europe
14:15 -14:30	Inter-relationship between risk assessment and due diligence <i>Explaining the 2nd step in six-step process of Due Diligence</i> Q&A	Bettina Grabmayr, Director Methodology & Research, EcoVadis
14:30 -15:45	Group Exercise based on scenario: How to set-up and implement effective risk assessment practices <i>1. Risk & Stakeholder Identification</i> <i>2. Risk Prioritization</i> <i>3. Risk Evaluation</i>	All participants <i>Moderated by CSR Europe</i>
15:45 -16:00	Coffee Break	
16:00 -16:30	Case Studies on how to identify and evaluate risks related to human rights and environmental impacts Q&A	Ioannis Mastoris, Sustainability Integration Manager, TITAN Camila Santos De Matos, ESG & Supply Chain, Euroclear James Bredemus, Head of ESG Risk Management, Euroclear Raymond Williams, Manager Responsible Sourcing, Umicore
16:30 -16:45	Keynote: Supporting Measures for Companies	István Németh, Policy Officer, European Commission, DG GROW
16:45 -17:00	Closing remarks & Next steps	CSR Europe
17:00 -18:00	Networking Cocktail	

*Please consider that the speakers are still in the process of being confirmed

CONTACT:

Lisa Simons *Project Manager, Materials*

lis@csreurope.org

Martina Ferrara Snider *Project Manager, Materials*

mf@csreurope.org

REPORTING ON SOCIAL PERFORMANCE ATELIER: Measuring & Reporting on Social Impact

TIME (CET)	SESSION	SPEAKERS
09:30 – 10:00	Registration & breakfast	
10:00 – 10:10	Introduction	CSR Europe
10:10 – 10:20	The growing relevance of the S of ESG <i>From a Financial Institution’s perspective</i>	Marc Basel <i>Promotional and Sustainable Finance Policy Expert</i> European Association of Public Banks (EAPB)
10:20 – 10:40	Policy overview <i>The 4 Social Standards in the ESRS:</i> - Own Workforce - Workers in the Value Chain - Affected Communities - Users & End Users	Elisabeth Trouvain <i>Sustainability Reporting Manager</i> EFRAG Marie Falk <i>Sustainability Reporting Technical Manager</i> EFRAG
10:40 – 11:15	Reaction panel from stakeholders and practitioners. <i>What are the main challenges?</i>	CSR Europe Members <ul style="list-style-type: none"> Rebekah Smith <i>Workforce and ESG Executive</i> IBM Andrea Salemm <i>Sustainability Specialist</i> Unipol
11:15 – 11:30	Coffee break	
11:30 – 12:45	Integrate Community Investment practices in your Sustainability Strategy <i>Practical guidance on the ‘how’</i>	Lonneke Roza <i>Head of Community Investment</i> NN Group Clodagh Connolly <i>Global Director</i> B4SI Andres Schottlaender <i>Managing Consultant</i> B4SI
12:45 – 13:00	Closing remarks	CSR Europe
13:00 – 14:00	Networking lunch	

**Please consider that the speakers are still in the process of being confirmed*



AGENDA

ATELIER: How to Identify Sustainability Risks & Adverse Impacts

ATELIER: Measuring & Reporting Social Impact

23-24 April 2024, Rue Victor Oudart 7, 1030 BRUSSELS

CONTACT:

Morris Massarutto *Project Manager, Markets & EU*

mm@csreurope.org