



# Jet-Net lightens up technology!

**Polo Bais**

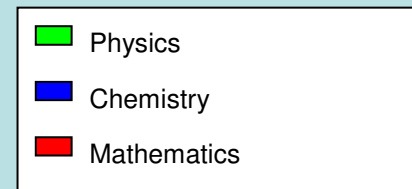
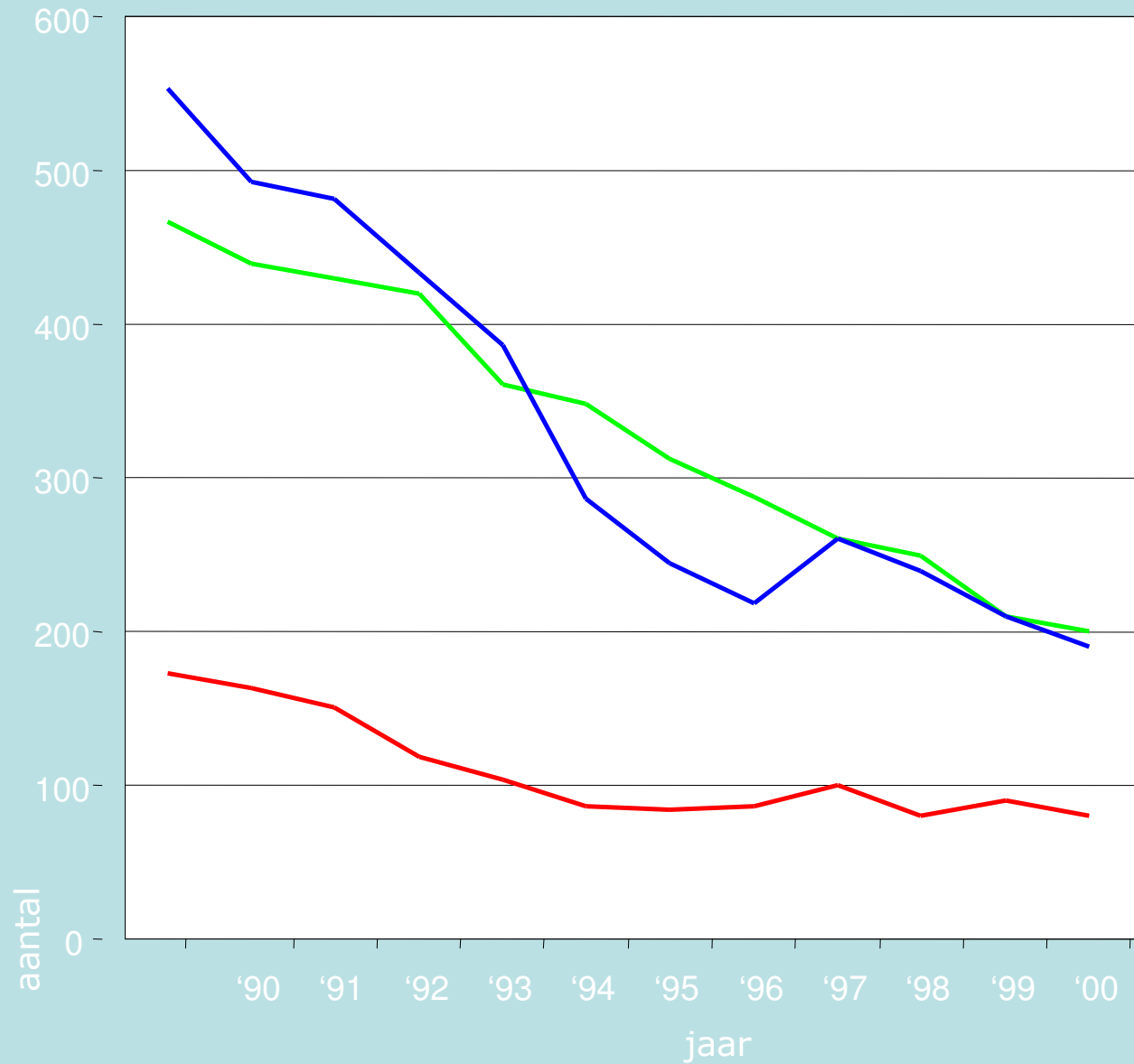
**Projectmanager Jet-Net**

## Nieuwspoort Den Haag



Minister Van der Hoeven delivers opening speech on press announcement

# University Intake 2000 (was Jet-Net start)



sourceAxis / VNO-NCW

# Why Jet-Net? How does Jet-Net work?

## Jet-Net aims:

**to increase the annual enrollment for higher education in science and technology**



## Jet-Net, a two-line based programme:

- 1. Creating a real-life environment for science subjects at school, making them more appealing and fun!**
- 2. Jet-Net companies offer students a better insight in the broad career perspectives in science and technology**

## Programme structure

**Programs are established between individual companies and schools**

**Programs are developed together by the school and company**

**Programs are subsequently offered in junior and senior high school years**

**National annual activities**



## Continuous programs throughout high school

### Junior years

#### Contextual

Profile choice information sessions

Workshop@the company

Guest lecture / Workshop@school

Science & technology fare

### Senior years

#### In depth

Company assisted research

Expert meeting

## Annual activities with a country wide range

- **Jet-Net Career Day**
- **Jet-Net Teachers Day**
- **Meet the Boss debate competition**
- **Girlsday**



## Criteria for succes

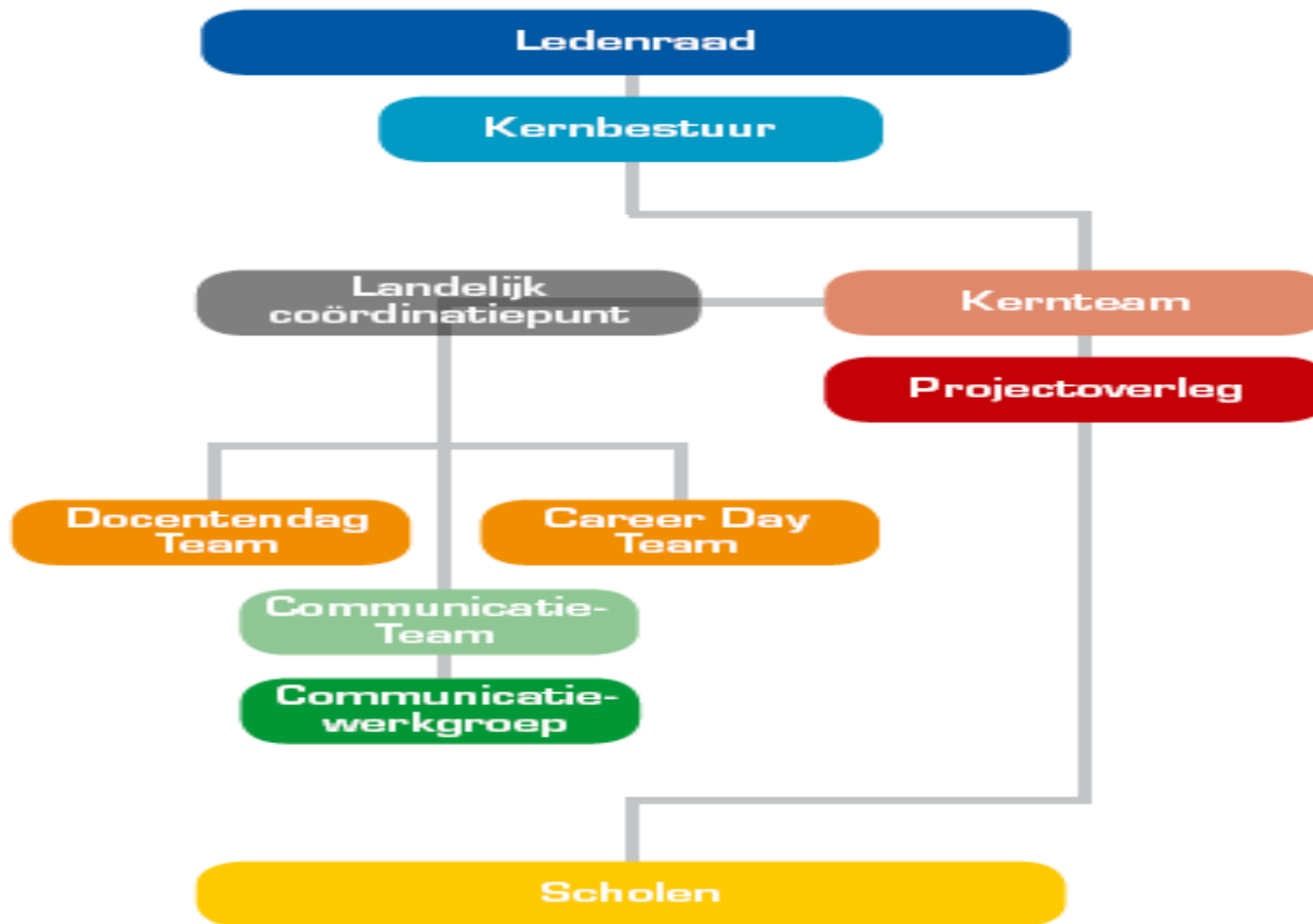
**Structural effort by the Jet-Net company:  
personnel, time and financial expenses**

**Active input from the Jet-Net school**

**Making enthusiasm work through professional  
procedures**

**Learning through experience!**





## Results; the strength of five years Jet-Net

- **30 Jet-Net companies** together working with **153 Jet-Net schools**
- **Number of students reached annually: 33.000**
- **2500 students** visited the **Jet-Net Career Day 2007**
- **250 teachers** visited the **Jet-Net Teachers Day in 2007**
- **Jet-Net waiting list: 120 high schools!**



## **Structural effort: financial expenses, personnel & time**

- **Jet-Net projectmanager**
- **Employees executing and assisting at Jet-Net activities**
- **Yearly contribution: 10.000 euro**

# Jet-Net: 30 companies & 10 partner organizations





**Thank you for your attention**